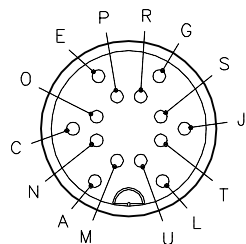



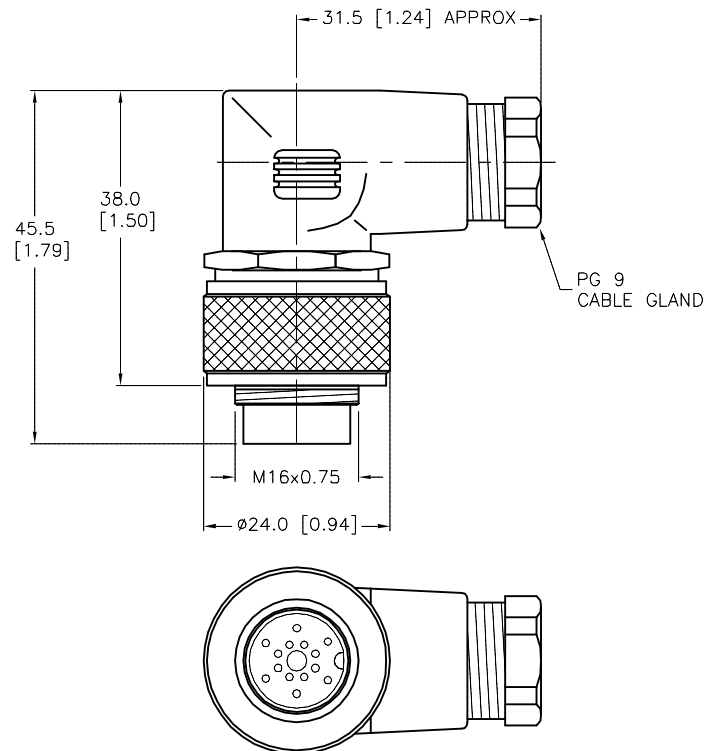
MALE END VIEW



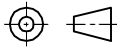
 M16 connector

SPECIFICATIONS

CONTACT CARRIER MATERIAL	NYLON
CONTACT MATERIAL/PLATING	COPPER ALLOY/GOLD
HOUSING MATERIAL	NYLON
COUPLING NUT MATERIAL/PLATING	BRASS/BLACK CHROMIUM
RATED CURRENT [A]	3.0 A
RATED VOLTAGE [V]	60 V
TEMPERATURE RANGE	-40°C to +95°C [-40°F to +203°F]
PROTECTION CLASS	MEETS IEC IP67
CABLE GLAND	PG 9 - ACCEPTS 6-8mm CABLE
CONNECTION TYPE	SOLDER CUP
MAX. CONDUCTOR SIZE	24 AWG



SOURCE DRAWING - FOR REFERENCE ONLY

RELATED DOCUMENTS		3RD ANGLE PROJECTION		<div>THIS DRAWING IS CONFIDENTIAL AND THE PROPERTY OF TURCK INC. USE OF THIS DOCUMENT WITHOUT WRITTEN PERMISSION IS PROHIBITED.</div> <div>TURCK INC <i>High Technology Sensors and Automation Controls</i></div>		<div>3000 CAMPUS DRIVE MINNEAPOLIS, MN 55441 1-800-544-7769 (763) 553-7300 (763) 553-0708 fax turck.com</div>				
1.										
2.		<div>ALL DIMENSIONS DISPLAYED ON THIS DRAWING ARE FOR REFERENCE ONLY</div> <div>CONTACT TURCK FOR MORE INFORMATION</div>		DRFT	RDS	DATE	05/06/16	DESCRIPTION WBS 14-0		
3.				APVD	M.B.	SCALE	1=1.0			
4.				UNIT OF MEASUREMENT MILLIMETER [INCH] DO NOT SCALE THIS DRAWING				IDENTIFICATION NO. U2-07161		REV A
MATERIAL								FILE: U2-07161		SHEET 1 OF 1
SEE SPECIFICATIONS										
FINISH										
SEE SPECIFICATIONS										

A	DRAWING RELEASE	RDS	06/22/16	
REV	DESCRIPTION	BY	DATE	ECO NO.